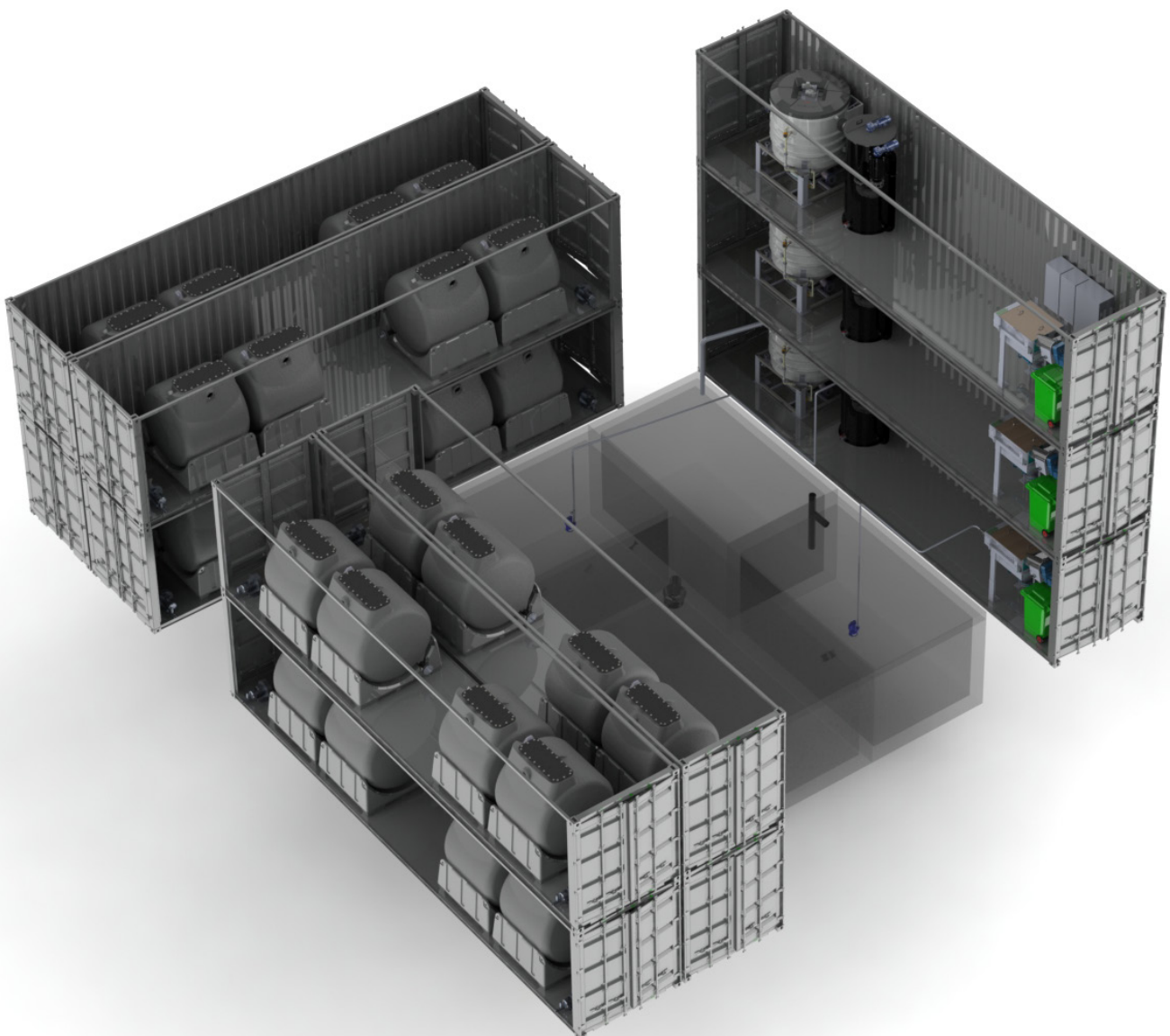


TECHNICAL DESCRIPTION

Wastewater treatment for 4,000–5,600 people



System components

*Insulated container. The plant can also be assembled inside an existing building without containers.

Unit process	Device	Number of devices
Plant frame	40' container*	12
Pre-screening	Pre-screening device	3
BOD removal & nitrification	Clewer R4000 bioreactor	32
Aeration	Side channel blowers	16
Precipitation	Chemical mixing station & Clewer flocculation unit FL-1000	4
Solid-liquid separation	Clewer flotation unit F-2900	4
Electricity + automation	Distribution central	1
Installation + accessories	Components installed to the containers	1
pH measurement	pH sensor + accessories	2 (1 spare)
Level measurement	Level sensor	3 (1 spare)
Chemical dosing	Dosing pumps + accessories	6
Chemical dosing	Controller	1
Pressurized air	Air compressor	2

Power consumption

Device	Pc	Power [kW]	Total power [kW]
Pre-screening device	3	1.1	3.3
Mixer	4	~2.5	~10.0
Pump	16	~1.1	~17.6
Pump	4	~2.4	~9.6
Clewer flotation unit F-2900	4	1.7	6.8
Chemical mixing station & Clewer flocculation unit FL-1000	4	0.7	2.8
Side channel blowers	16	4.0	64.0
Air compressor	2	1.1	2.2
Dosing pumps + accessories	Σ	0.2	0.2
Total power demand [kW]			115.4
Total continuous power demand [kW]			101.2

Consumables

pH adjustment	Sodium hydroxide	20-40g/m ³
Flocculation	Polyaluminium chloride	80-150ml/m ³
Denitrification	Ethanol (or other equivalent carbon source)	50-100ml/m ³

Clewer provides patented and ecological wastewater treatment systems for industry and communities worldwide.

Contact us!

info@clewer.com, www.clewer.com

CLEWER
clean water