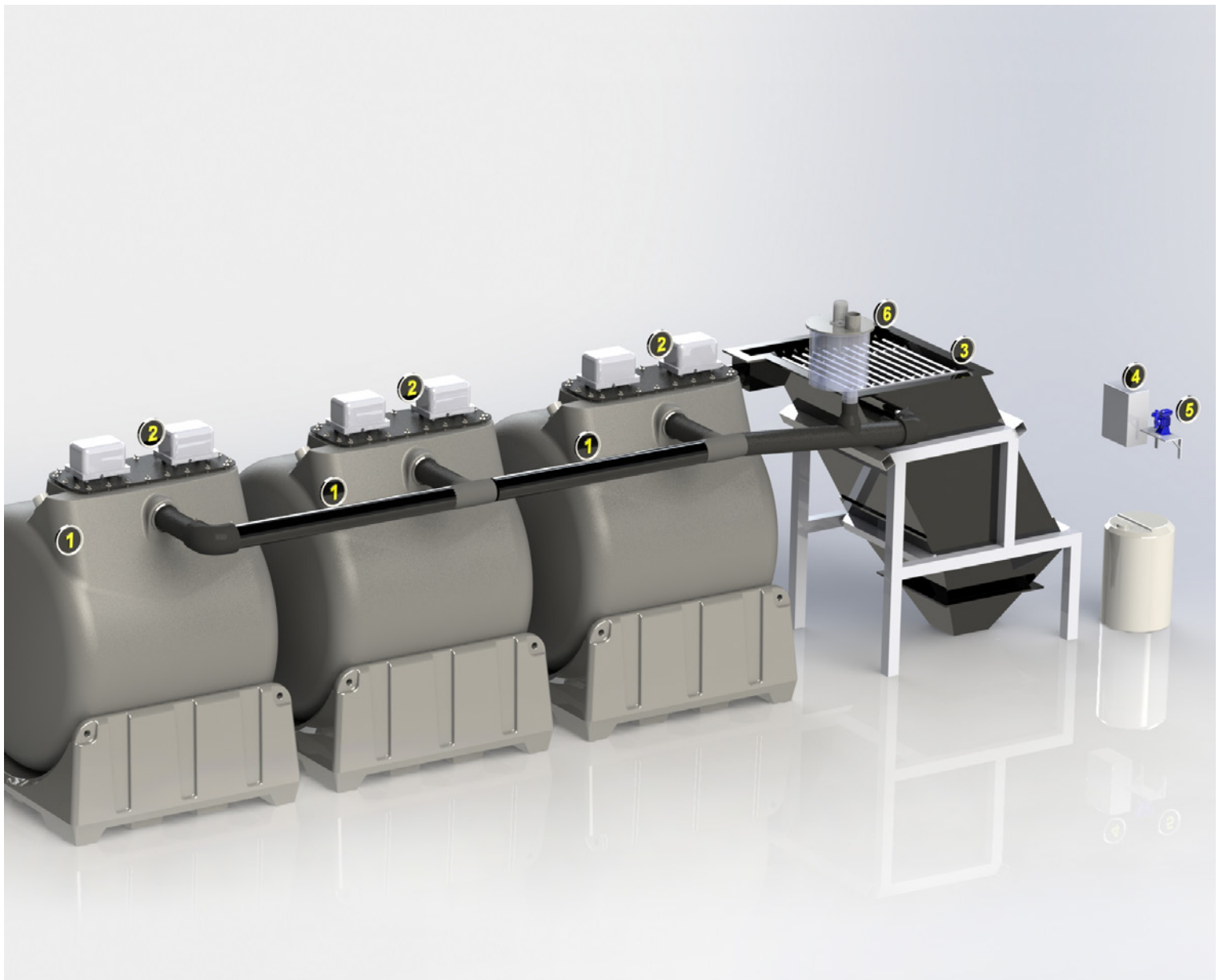


TECHNICAL DESCRIPTION FOR AUTOMATIC CAR WASH

# RBBR system for car wash washing 450 cars per day



## System components

\*Replaces the washing machines' old water storage tank

Unit process	Device	Number of devices
1 Biological filter	Clewer RBBR R4000	3
2 Aeration	Diaphragm blower	6
3 Solid-liquid separation	Lamella clarifier	1
4 Automation	Distribution central	1
5 Nutrient dosing	Dosing pump	1
6 Excess foam breaking	Clewer antifoam device	1
Water storage*	Clewer storage tank	1

## Power consumption

Device	Function	Power
Submersible pump*	Water recycle	~2.4kW
Air blowers	Aeration of the RBBR	1.5kW
Antifoam	Excess foam breaking	0.4kW
Chemical pump	Nutrient dosing	0.015kW
<b>Total continuous power demand</b>		<b>4.3kW</b>

\*Installed into the sand separator

## Consumables

Nutrient for the microbes	Consumption approximately 30ml/wash (list price €2/l)
---------------------------	---

## Maintenance

Procedure	Performed/year	Working time
Cleaning of the aerator pipes	Every 3-5 years	1 1/2 hour (draining the reactors ~1 hour)
Cleaning/changing the air blower filters	Every three months, depending on the indoor air quality	1 1/2 hour
Chemical refills	According to storage volume, consumption approximately 30ml/wash	1/2 hour
Sludge removal	According to sludge tank volume	1-2 hours

Clewer provides patented and ecological wastewater treatment systems for industry and communities worldwide.

### Contact us!

info@clewer.com, www.clewer.com

**CLEWER**<sup>®</sup>  
clean water